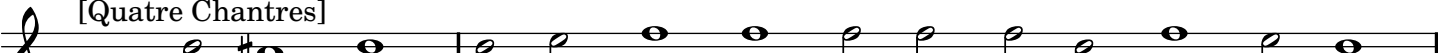


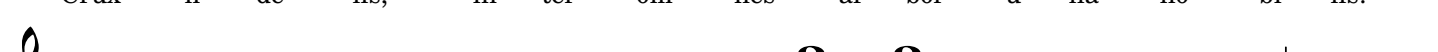
Hymnus

Chants pour les religieuses bénédictines 1664

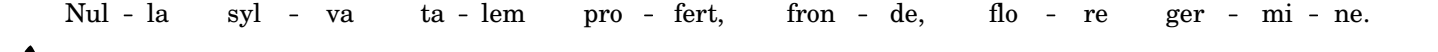
[Quatre Chantres]



Crux fi - de - lis, in - ter om - nes ar - bor u - na no - bi - lis:

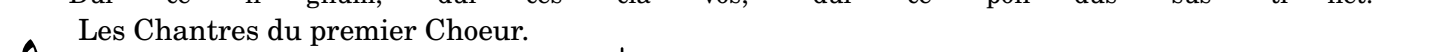


Nul - la syl - va ta - lem pro - fert, fron - de, flo - re ger - mi - ne.

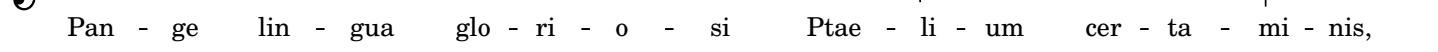


Dul - ce li - gnum, dul - ces cla - vos, dul - ce pon - dus sus - ti - net.

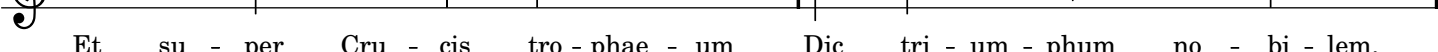
Les Chantres du premier Choeur.



Pan - ge lin - gua glo - ri - o - si Ptae - li - um cer - ta - mi - nis,



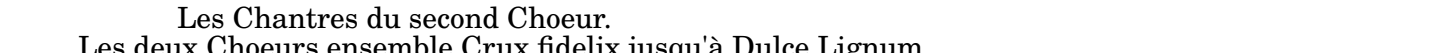
Et su - per Cru - cis tro - phae - um Dic tri - um - phum no - bi - lem,



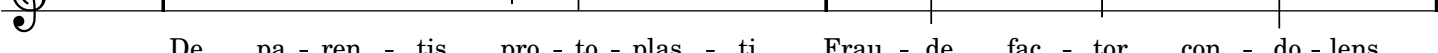
Qua - li - ter Re - demp - tor or - bis Im - mo - la - tus vi - ce - rit.

Les Chantres du second Choeur.

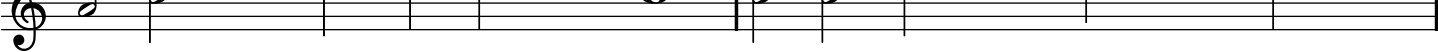
Les deux Choeurs ensemble Crux fidelix jusqu'à Dulce Lignum.



De pa - ren - tis pro - to - plas - ti Frau - de fac - tor con - do - lens,



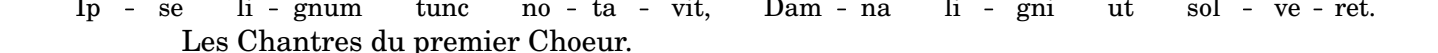
Quan - do po - mi no - xi - a - lis, Mor - su in mor - tem cor - ru - it:



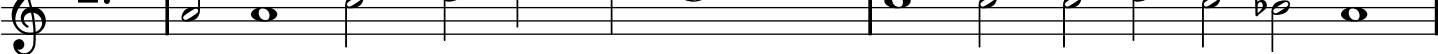
Ip - se li - gnum tunc no - ta - vit, Dam - na li - gni ut sol - ve - ret.

Les Chantres du premier Choeur.

Les 2. Choeurs. Dulce lignum, &c. jusqu'à l'Hymne.



Ho - co - pus nos - trae sa - lu - tis Or - do de - po - pos - ce - rat;



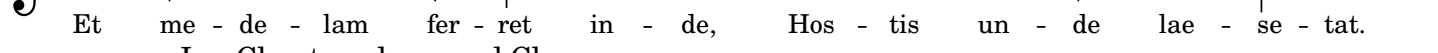
Mul - ti for - mis pro - di - to - ris Ars ut ar - tem fal - le - ret,



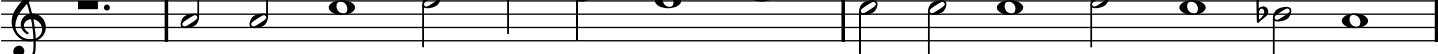
Et me - de - lam fer - ret in - de, Hos - tis un - de lae - se - tat.

Les Chantres du second Choeur.

Les deux Choeurs. Crux fidelis.



Quan - do ve - nit er - go sa - cri Ple - ni - tu - do tem - po - ris,



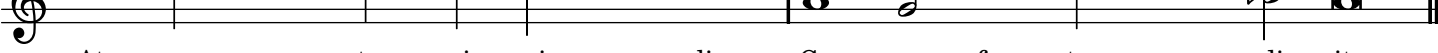
Mis - sus est ab ar - ce Pa - tris. Na - tus or - bis con - di - tor;



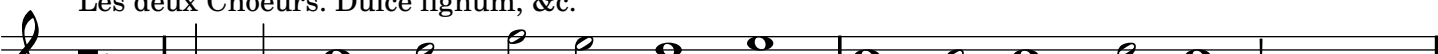
At - que ven - tre vir - gi - na - li Ca - ro fac - tus pro - di - it.

Les Chantres du premier Choeur.

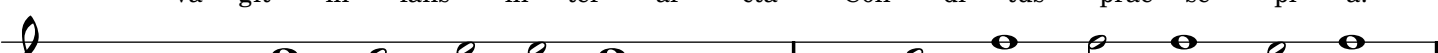
Les deux Choeurs. Dulce lignum, &c.



Va - git in - fans in - ter ar - cta Con - di - tus prae - se - pi - a:



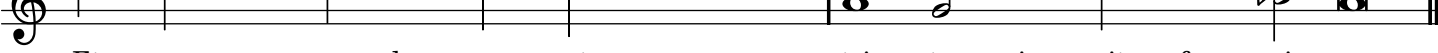
Mem - bra pan - nis in - vo - lu - ta Vir - go ma - ter al - li - gat



Et ma - nus, pe - des - que et cru - ra stric - ta cin - git fas - ci - a.

Les Chantres du second Choeur.

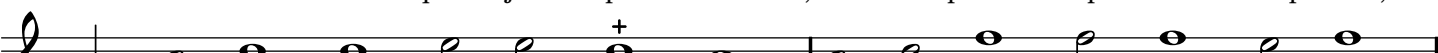
Les deux Choeurs. Crux fidelis, &c.



Lus - tris sex qui jam per ac - tis, Tem - pus im - plens cor - po - ris,



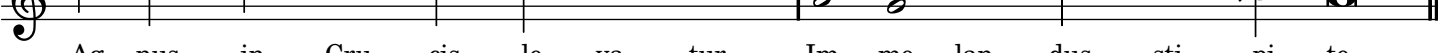
se vo - len - te na - tus ad hoc, Pas - si - o - ni de - di - tus,



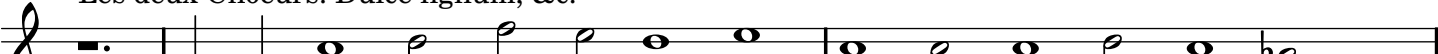
Ag - nus in Cru - cis le - va - tur, Im - mo - lan - dus sti - pi - te.

Les Chantres du premier Choeur.

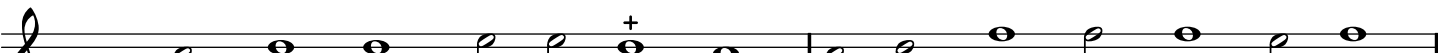
Les deux Choeurs. Dulce lignum, &c.



So - la di - gna tu fu - is - ti Fer - re sae - cli pre - ti - um,



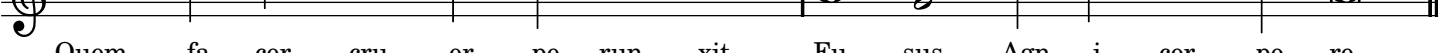
At - que por - tum prae - pa - ra - re, Nau - ta mun - do nau - fra - go,



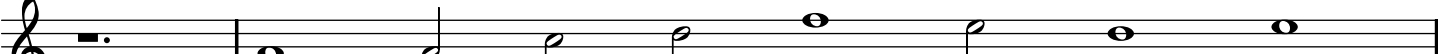
Quem fa - cer cru - or pe - run - xit, Fu - sus Agn - i cor - po - re.

Les Chantres du second Choeur.

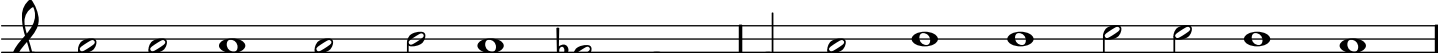
Les Choeurs. Crux fidelis, &c.



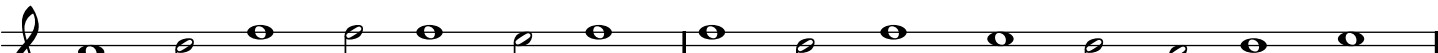
Glo - ri - a et ho - nor De - o,



Us - que - qua - que Al - tis - si - mo, U - na Pa - tri, Fi - li - o - que,



In - cly - to Pa - ra - cly - to; Cu - i laus est, et po - tes - tas,



Per ae - ter - na sae - cu - la. A - men.

Les deux Choeurs. Dulce lignum, &c.

