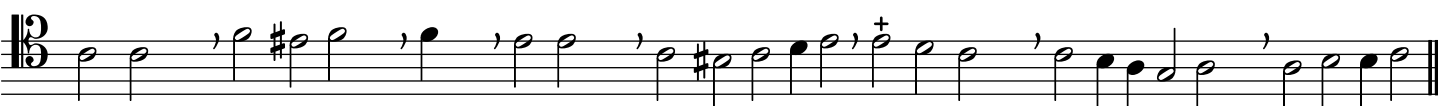


Supplément de plusieurs messes, [Ballard, XVIIIe siècle]



A-gnus De - i, qui tol - lis pec-ca-ta mun - di, mi-se-re - re no - bis...



A-gnus De - i, qui tol-lis pec - ca-ta___ mun - di, mi-se-re - re no - bis...



A-gnus De-i, qui tol-lis pec-ca-ta___ mun - di do-na___ no-bis___ pa - cem...